



ISSUE 21 2025



columbusequipment.com

THE INDUSTRY'S RESOURCE FOR INDUSTRY-LEADING COMPACT EQUIPMENT

COMPACT



AVANT[®]

COLUMBUS COMMONS

TAKEUCHI TB395W WHEELED EXCAVATOR: **Gaining in Popularity ... For Good Reason**



Takeuchi's TB395W wheeled excavator provides operators with a highly versatile option that combines powerful excavating performance with on-road capabilities, making it ideal for shorter-term, faster-paced projects.

"With the new TB395W, we're providing customers with a larger, high-performing machine that provides all the unique benefits of a wheeled unit," said Columbus Equipment Company General Sales Manager Jeff Badner. "This includes less disruption to existing infrastructure and higher travel speeds from Point A to Point B."

"With the new TB395W, we're providing customers with a larger, high-performing machine that provides all the unique benefits of a wheeled unit."

Jeff Badner; General Sales Manager, Columbus Equipment Company

The TB395W features two four-wheel steering modes—all-wheel steering and crab steering. A wide-range, longer-stick arm allows for greater clearance between the bucket and dozer blade. As a result, operators can pull the bucket all the way to the dozer blade, which is ideal when working in narrow spaces.

Auto Cruise enables operators to set and adjust their travel speeds by pressing a button or operating a toggle switch. Auto Cruise is ideal for attachments that

require a consistent, repeatable travel speed, such as a mulcher, mower or trencher.

A redesigned interior improves the operator experience. The cab features simple, one-touch control switches that operate multiple machine functions; an easy-to-read 8" touchscreen, multifunction color monitor with integrated air conditioning and radio functions. A deluxe, high-back, air-ride suspension seat; adjustable arm rests, low-effort pilot controls, large flat floor area and integrated footrests also help operators remain more comfortable and productive throughout the workday.

The TB395W excavator weighs 23,425 lbs. and is powered by a 114 HP Tier 4 Final diesel engine. A closed-loop, load-sensing hydraulic system delivers smooth control of the work equipment and a wide range of hydraulic attachments. The TB395W's 13-foot digging depth and 27-foot cutting height make it particularly useful on construction sites. The excavator offers a maximum bucket breakout force of 13,240 lbs. and a maximum arm digging force of 8,925 lbs.

Because proper maintenance and service work are imperative for long machine life, the TB395W's design promotes easy access to key daily inspection points like the engine oil dipstick, engine oil filter, engine oil fill and more.

Takeuchi's Fleet Management (TFM) telematics system is available on the TB395W. TFM gives owners the ability to geofence their machines, helping them protect and secure their investments.

Contact your local Columbus Equipment Company rep and schedule a demo of the highly versatile Takeuchi TB395W Wheeled Excavator today!



KUBOTA KX040-5 COMPACT EXCAVATOR, **The World's #1 Selling Mini Excavator: Upgraded!**



There are many reasons the KX040 is Kubota's best-selling compact excavator and has dependably met the needs of rental, construction, landscaping and utility customers since its introduction 12 years ago.

Customers can expect a maximum travel speed of 3.1 mph, dig depth of 11 feet 2 inches, and a bucket breakout force of 9,397 lbs. from the KX040-5's 40 gross-horsepower Tier 4 Final Kubota engine. They can also choose between three dozer blades, including a six-way blade option, a fixed blade (standard), and an angle blade.

"The layout, ergonomic design to the controls, the jog dial and soft touch buttons make it super easy. It's very intuitive for the operator."

Jeff Badner, General Sales Manager, Columbus Equipment Company

The KX040-5's new hydraulic system enables multifunction operation. The operator can travel while simultaneously moving the boom for running an attachment such as a mower. Auxiliary hydraulic flow is controlled by the 7-inch color LCD touchscreen. "The rate can be adjusted from one-way to two-way directional flow for that breaker use," explained General

Sales Manager Jeff Badner. "That makes it super versatile for the operator out there in the field." The load-sensing hydraulics also deliver smooth and efficient operation.

The KX040-5 has an operating weight of 9,182-10,075 lbs. (depending on configuration), is loaded with upgrades and comes in the new Dash-5 machine color scheme of black and Kubota orange.

The operator will also enjoy a roomier cab with more foot and head space and increased visibility to the worksite, thanks to an expanded glass window area. The front glass can be raised up and out of the way, and the bottom front glass can be removed and stowed inside the cab.

Kubota also reduced the noise in the cab. "This is one of the quietest cabs around in this size machine," Badner said. The controls are designed for easier operation, he added. "The layout, ergonomic design to the controls, the jog dial and soft touch buttons make it super easy. It's very intuitive for the operator."

Additional new features in the cab include keyless entry and start system that can store up to 10 passcodes, LED work lights with a turn-off delay so operators can see when leaving in the dark, a USB phone charger, and Bluetooth capabilities. Kubota also offers a ROPS canopy option for the KX040-5, as well as dealer-installed rearview camera, and air-suspension seat options.

Call your Columbus Equipment Company rep today and discover why the KX040 is the best-selling mini excavator from the world's largest mini excavator manufacturer.



FREE
FAMILY MOVIE NIGHT
MOANA
FRIDAY, SEPTEMBER 11
7PM
National
is on your



COLUMBUS COMMONS:

Avant 735 Changes the Site Preparation Game



Columbus Commons is more than six acres of greenspace in downtown Columbus. It's a public park, event space, and a gathering spot for locals and visitors alike. Hosting more than 200 free events and 200,000 visitors annually, Columbus Commons is where the community comes together for movie nights, large-scale concerts, weekly fitness classes, and more.

Kacey Browning, general manager, describes Columbus Commons as "a mixed-use event space that moonlights as a concert venue." Each event requires a different setup, and with more than one event occurring

less than a foot of soil between them and the garage, resulting in severe weight restrictions on the lawns. Heavy equipment can only be on hardscaped areas.

"For concert setup, the Avant can pick up and move speaker cases directly onto the stage, cutting a formerly three-hour task to about 40 minutes."

Kacey Browning; General Manager, Columbus Commons

When Columbus Equipment Company brought an Avant articulated loader to the site a few years ago, Browning found the solution he'd been looking for.

on a given day, Browning's staff may need to work on an upcoming event while another is still in progress.

However, the park has a quirk that limits the use of heavy equipment. The park is "a true green roof," built over an underground parking garage – all that remains of the defunct shopping mall Columbus Commons replaced, Browning said. The park's green areas have

"We usually rented a forklift, which only has a 3,000-pound capacity and can only be used on the hardscape. If we had to move anything heavy onto the lawn, we had to do it manually. That increased our need for labor. There was no efficient way to move anything around," Browning said.

When Columbus Equipment Company brought an Avant articulated loader to the site a few years ago, Browning found the solution he'd been looking for. "The Avant articulates, you can drive it on the turf, and we could still handle and do everything a forklift and [traditional] loader would be able to do."

The Avant is a multi-functional, compact, articulated



An array of over 200 attachments makes Avant one of the most versatile solutions on the market.

loader with an offset telescopic boom. With about 200 attachments available, owners can infinitely customize the Avant to their specific needs.

Columbus Commons purchased an Avant 735 in March with three primary attachments: forklift, grabber, and ball hitch. With the forklift attachments, the Avant replaces a traditional forklift. "It has hydraulic actuators. Everything can be operated from the seat, so we don't have the physical tasks of having to move the forks," Browning noted.

"Operators love the machine. I've never seen a more comfortable cab. The seat is comfortable; the line of sight is terrific."

Kacey Browning; General Manager, Columbus Commons

The park's grabber tool is specialized for moving water barrels. Since the soil on the lawn is only 10 inches deep, nothing can be staked, and the park uses 55-gallon water barrels to hold things in place. "Before we had the Avant, we couldn't use any machinery to move the barrels onto the lawn. We had to pour the water out and roll them around, wasting time and water. Now, the grabber tool squeezes the sides in, and it's easy to move them around," he explained.

With the ball hitch on the front of the Avant, workers can pick a trailer up off a truck and put it exactly where needed.


"The Avant has improved efficiency in so many ways," Browning said. "What used to be a four-man job is now a two-man job because all we need is a spotter on the ground and the operator in the machine." For concert setup, the Avant can pick up and move speaker cases directly onto the stage, cutting a formerly three-hour task to about 40 minutes.

The Avant is light enough to travel on the lawn, so operators can go straight across the park rather than following the longer route required to stay on hardscaping. And with travel on the lawn possible, workers no longer need to wait for participants from one event to vacate the sidewalks before setting up for the next gathering.

"Operators love the machine," Browning said. "I've never seen a more comfortable cab. The seat is comfortable; the line of sight is terrific. There's never been this much technology in a standard forklift." Because the machine articulates, it's different than using a standard forklift, but "it took all of 10 minutes to get comfortable with it," he added.



Browning has been impressed by his experience with Columbus Equipment Company, too. After discovering Avant, he left a message on the CEC website and compact sales rep Josh Kemmerer quickly contacted him. "Josh took the time to learn about our facility and to make sure we were getting the unit we needed with the attachments that made the most sense," Browning said. The company also quickly repaired the machine under warranty when it had a minor issue. "The service team was fantastic."

Since discovering the Avant, Browning has noticed more and more organizations purchasing the loader. "I think the word is getting out about how beneficial the Avant can be," he said. 



DEPENDABLE USED EQUIPMENT



Pre-owned equipment serves an important role in most operations, and represents a versatile, cost-efficient solution in dynamic jobsite environments just like yours. Contractors statewide routinely count on Columbus Equipment Company because of the expertise, equipment support and value we have delivered over the past 70 years in the industry.



Craig Curtis

Remarketing Business Manager

Email: craigc@columbusequipment.com

Cell: (614) 302-1168

Office: (614) 437-0384

**Equipment sitting around not being used?
Contact Craig at (614) 302-1168 today!**

Discuss your equipment needs, as well as how to take advantage of the current market conditions and get the most value for any underutilized equipment.

columbusequipment.com

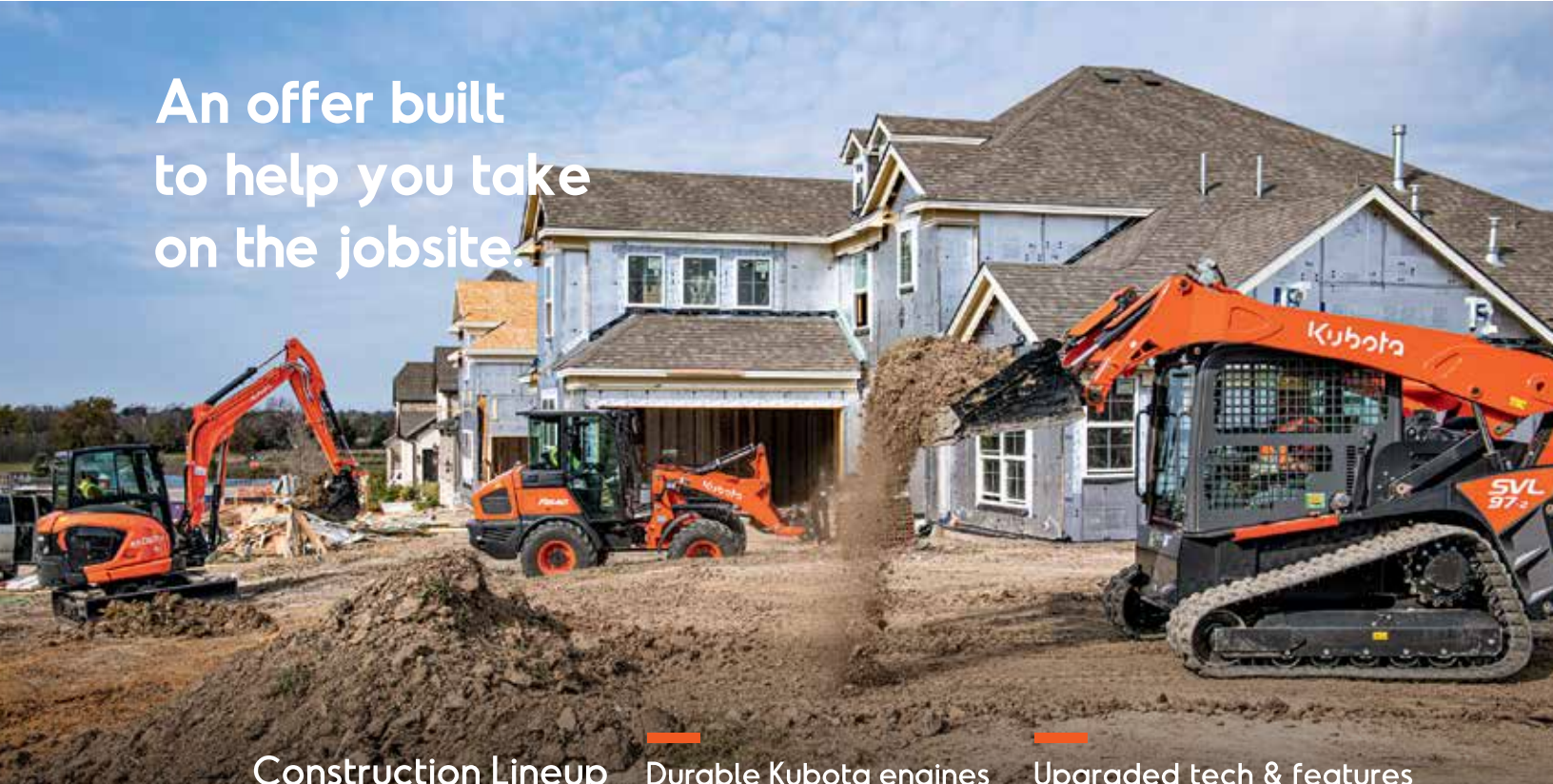


Ohio's Dependable Dealer



© 2025 Mediaworks Marketing, Inc.

An offer built
to help you take
on the jobsite.



Construction Lineup Durable Kubota engines Upgraded tech & features



\$0 DOWN **0%** APR FOR UP TO **36** MONTHS OR SAVE UP TO **\$8,000***

KubotaUSA.com

VISIT US TODAY FOR THIS LIMITED-TIME OFFER

*© Kubota Tractor Corporation, 2025. 0% A.P.R. financing for up to 36 months on purchases of select new Kubota construction equipment from Columbus Equipment Company's in-stock inventory is available to qualified purchasers through Kubota Credit Corporation, U.S.A.; subject to credit approval. Example: 36 monthly payments of \$27.78 per \$1,000 financed. Up to \$8,500 rebates are not available with 0% A.P.R. or other promotional financing. Rebates not available with 0% A.P.R. or other promotional financing. Offers expire 9/30/25. Terms subject to change. This material is for descriptive purposes only. Kubota disclaims all representations and warranties, express or implied, or any liability from the use of this material. For complete warranty, disclaimer, safety, incentive offer and product information, consult Columbus Equipment Company or KubotaUSA.com. Note: Kubota products available at Columbus, Perrysburg and Dayton locations only.

COLUMBUS* (614) 443-6541 **PERRYSBURG*** (419) 872-7101 **CINCINNATI** (513) 771-3922 **RICHFIELD** (330) 659-6681 **CADIZ** (740) 942-8871 **DAYTON*** (937) 879-3154 **MASSILLON** (330) 833-2420 **ZANESVILLE** (740) 455-4036 **PIKETON** (740) 289-3757

Return Address: 2323 Performance Way, Columbus, OH 43207

www.columbusequipment.com